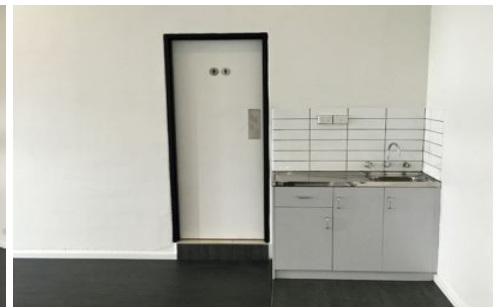
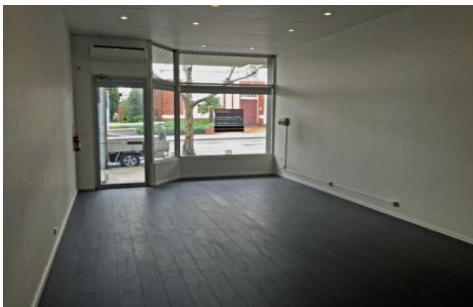




CRABTREES

REAL ESTATE



4/10A Atherton Road OAKLEIGH VIC

Central Oakleigh location with prominent Atherton Road exposure - Ideal for retail, office or consulting use.

Property Features:

- + As new wooden floorboards
- + Reverse cycle air-conditioning system
- + Bright down lights installed throughout
- + Modern amenities including kitchenette
- + Located moments from Oakleigh Train Station & thriving Eaton Mall

Price : annual
Building Size : 50 sqm
View : <https://www.crabtrees.com.au/lease/vic/east/oakleigh/commercial/offices/5862653>

<https://www.crabtrees.com.au>

Crabtrees Real Estate is built on history, reputation and expertise. We offer a level of knowledge others can't match.