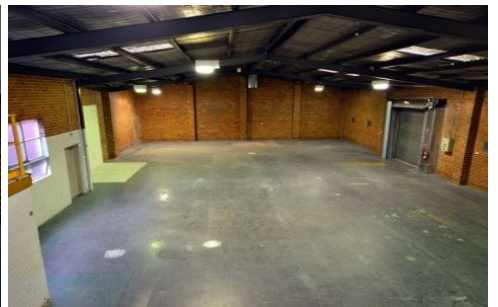
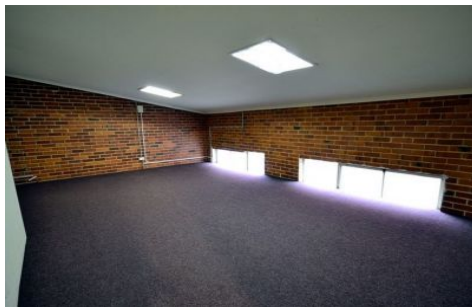
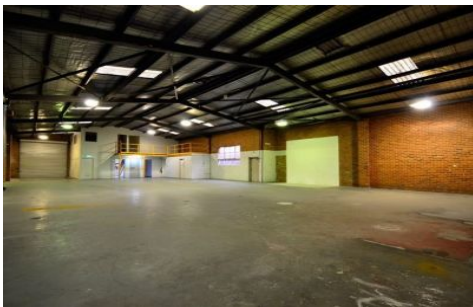




CRABTREES

REAL ESTATE



42 Westminster Street OAKLEIGH VIC

For lease is this quality freestanding office warehouse of 517sqm approx in the heart of the tightly held Oakleigh industrial precinct.

Features:

- + Total building area of 517sqm approx.
- + Two storey offices of 114sqm approx.
- + Clear span warehouse of 403sqm approx.
- + Roller shutter door
- + 3 Phase power

The property is located close to train stations, all amenities,

Price : \$42,000p/a RENT REDUCED!
Building Size : 517 sqm
View : <https://www.crabtrees.com.au/lease/vic/east/oakleigh/commercial/industrial/5862682>

<https://www.crabtrees.com.au>

Crabtrees Real Estate is built on history, reputation and expertise. We offer a level of knowledge others can't match.