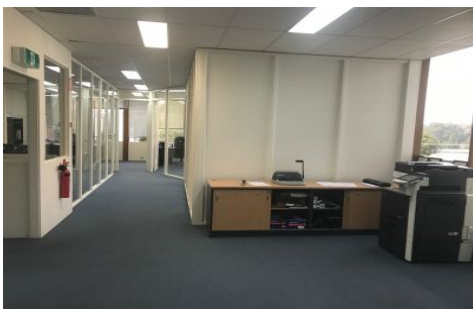




CRABTREES

REAL ESTATE



46 Smith Road SPRINGVALE VIC

High quality office warehouse of 891sqm approximately with excellent access to Princes Highway, Police Road and Monash Freeway.

Key property features include:

- + Includes well appointed two level office of 222sqm approximately
- + Mixture of partitions/open plan office areas
- + Excellent warehouse height
- + Oversized motorised roller door
- + Secure staff carparking

Please contact Crabtrees for further information or inspection.

Crabtrees Real Estate is built on history, reputation and

Price : annual
Building Size : 891 sqm
View : <https://www.crabtrees.com.au/lease/vic/south-east/springvale/commercial/offices/5862687>

<https://www.crabtrees.com.au>

Crabtrees Real Estate is built on history, reputation and expertise. We offer a level of knowledge others can't match.