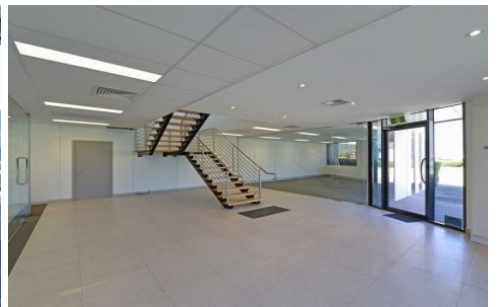
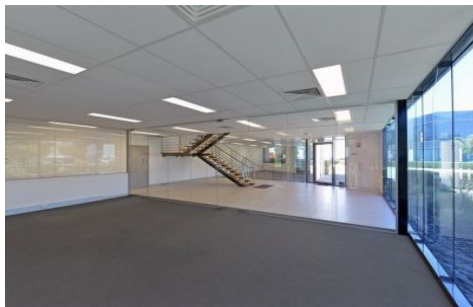




CRABTREES

REAL ESTATE



2/66-74 Micro Circuit DANDENONG VIC

Located in one of Dandenongs best estates with only seconds to South Gippsland Highway

Features Include:

- + 1440sqm total building area
- + Includes 290sqm partitioned offices
- + Two container height roller doors
- + Ample on site parking
- + Pallet racking available
- + Great access to the M1 freeway

Price : annual
Building Size : 1440 sqm
View : <https://www.crabtrees.com.au/lease/vic/south-east/dandenong/commercial/offices/5862732>

For more details and inspections call today!

<https://www.crabtrees.com.au>

Crabtrees Real Estate is built on history, reputation and expertise. We offer a level of knowledge others can't match.