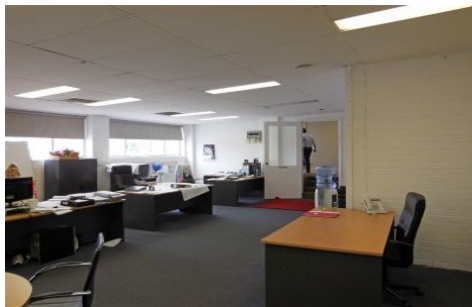




CRABTREES

REAL ESTATE



35-37 Henderson Road CLAYTON VIC

Well presented office warehouse of 1,100sqm* ideally located in Henderson Road just off Wellington Road in close proximity to the Monash Freeway, Princes Highway and Monash University.

Features:

- + Carpeted and air-conditioned office of 160sqm*
- + 2 roller doors
- + Second office or showroom of 15sqm*
- + Warehouse area of 925sqm*
- + Securely fenced car park and loading area
- + Rear storage area

Crabtrees Real Estate is built on history, reputation and expertise.

Price : annual
Building Size : 1100 sqm
Land Size : 1690 sqm
View : <https://www.crabtrees.com.au/lease/vic/east/clayton/commercial/industrial/5862770>

<https://www.crabtrees.com.au>

Crabtrees Real Estate is built on history, reputation and expertise. We offer a level of knowledge others can't match.