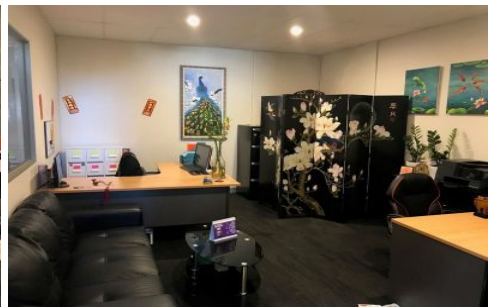
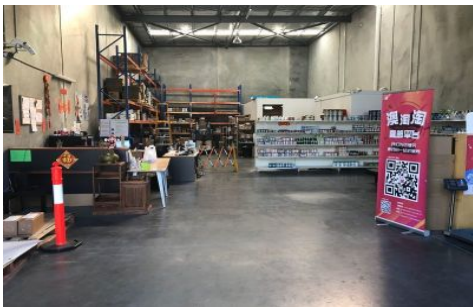




CRABTREES

REAL ESTATE



3/20 Edward Street OAKLEIGH VIC

4 🚗

Outstanding near new warehouse of 246sqm approx. located in the heart of Oakleigh.

Features:

- + Includes air-conditioned office of 24sqm approx.
- + Excellent warehouse height of 7 metres approx
- + Container height motorised roller door
- + Adjacent parklands and soccer ground

Rare new industrial development in the heart of Oakleigh that is close to train stations, all amenities, arterial roads and some of the best cafe's in Melbourne.

Crabtrees Real Estate is built on history, reputation and expertise.

Price : annual
Building Size : 246 sqm
View : <https://www.crabtrees.com.au/lease/vic/east/oakleigh/commercial/industrial/5862778>

<https://www.crabtrees.com.au>

Crabtrees Real Estate is built on history, reputation and expertise. We offer a level of knowledge others can't match.