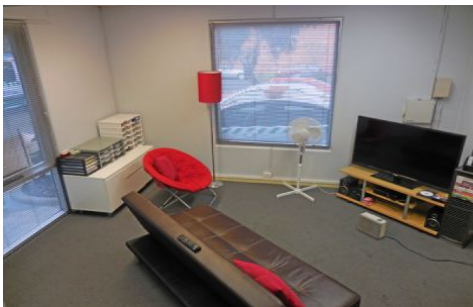




# CRABTREES

REAL ESTATE



## 31A Hume Street HUNTINGDALE VIC

This office warehouse is located off Huntingdale Road and North Road, in close proximity to Huntingdale and Oakleigh's retail precincts.

Property Features:

- + Excellent warehouse height
- + Container height motorised roller door
- + Dual level offices of 100m<sup>2</sup>
- + Reverse cycle air-conditioning
- + On-site parking
- + 3 phase power

**Price** : annual  
**Building Size** : 258 sqm  
**View** : <https://www.crabtrees.com.au/lease/vic/east/huntingdale/commercial/offices/5862791>

<https://www.crabtrees.com.au>

Crabtrees Real Estate is built on history, reputation and expertise. We offer a level of knowledge others can't match.