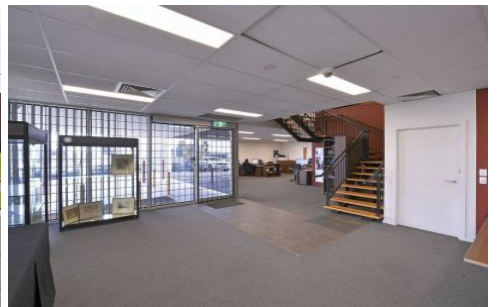




CRABTREES

REAL ESTATE



1 Torteval Place CLAYTON VIC

This fantastic near new Corporate Headquarters of 2,887sqm* boasts two levels of quality fitted offices, high clearance warehouse and three roller doors.

Features:

- + Prominent corner location
- + Architect designed building
- + Excellent clear span warehouse of 2,470sqm* with height up to 7.5m
- + 3 container access roller doors
- + Fully carpeted and air conditioned offices of 417sqm* over 2 levels with ground floor showroom space
- + Securely fenced front yard/car park

Great location on the corner of McNaughton Road just off Princes Highway and close to Monash M1 Freeway with

Price : annual
Building Size : 2887 sqm
View : <https://www.crabtrees.com.au/lease/vic/east/clayton/commercial/industrial/5862797>

<https://www.crabtrees.com.au>

Crabtrees Real Estate is built on history, reputation and expertise. We offer a level of knowledge others can't match.