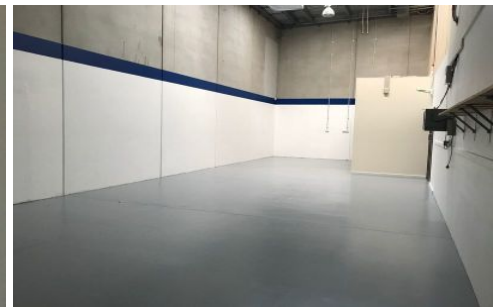
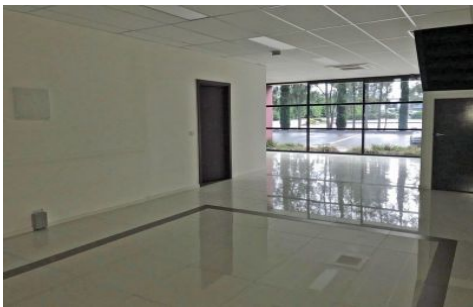




CRABTREES

REAL ESTATE



12/1488 Ferntree Gully Road KNOXFIELD VIC

Located within a popular industrial complex in Knoxfield and positioned within moments to arterial roads including EastLink and Stud Road, is the flexible facility with the potential to be used by a wide variety of occupiers!

- + Large front showroom/display area
- + Rear clean room/tech area
- + High clearance warehouse with container height roller door
- + Large tiled training area/class room with small kitchenette
- + First floor partitioned offices
- + Air-conditioning throughout!

Crabtrees Real Estate is built on history, reputation and expertise.

We offer a level of knowledge others can't match.

Price : annual
Building Size : 282 sqm
View : <https://www.crabtrees.com.au/lease/vic/east/knoxfield/commercial/offices/5862863>

<https://www.crabtrees.com.au>

Crabtrees Real Estate is built on history, reputation and expertise. We offer a level of knowledge others can't match.