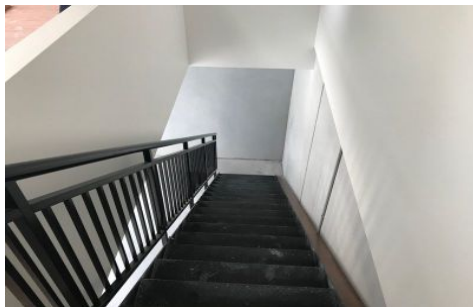




# CRABTREES

REAL ESTATE



**24/25-37 Huntingdale Road BURWOOD VIC**

**2** 

Crabtrees are pleased to offer for lease this as new office warehouse of 164sqm\*.

Features include:

- + Bright, clear span warehouse of 134sqm
- + First floor mezzanine office of 30sqm
- + 2 on site car parks
- + Container height roller door
- + Available NOW!

Call Crabtrees for more information or to arrange an inspection.

Crabtrees Real Estate is built on history, reputation and expertise.

**Price** : annual  
**Building Size** : 164 sqm  
**View** : <https://www.crabtrees.com.au/lease/vic/east/burwood/commercial/industrial/5862865>

<https://www.crabtrees.com.au>

Crabtrees Real Estate is built on history, reputation and expertise. We offer a level of knowledge others can't match.