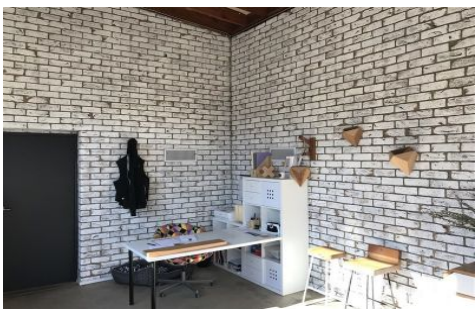




# CRABTREES

REAL ESTATE



## 2/27 Concord Crescent CARRUM DOWNS VIC

In the heart of Carrum Downs sits this perfect starter.

Features include:

- + 174sqm total building area
- + Brick factory with reasonable height
- + Roller door access
- + Small office of 25sqm approx
- + Carparking at front
- + Excellent access to Lathams Road, Frankston-Dandenong Road, Peninsula Link and EastLink

For more details call today!

Crabtrees Real Estate is built on history, reputation and expertise.

**Price** : annual  
**Building Size** : 174 sqm  
**Land Size** : 389 sqm  
**View** : <https://www.crabtrees.com.au/lease/vic/bayside/carrum-downs/commercial/offices/5862885>

<https://www.crabtrees.com.au>

Crabtrees Real Estate is built on history, reputation and expertise. We offer a level of knowledge others can't match.