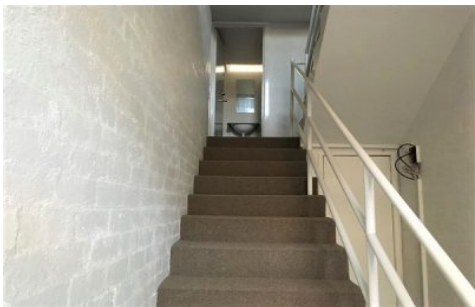




CRABTREES

REAL ESTATE



First Floor/14 Station Street OAKLEIGH VIC

Located in the heart of Oakleigh, this first floor office space is perfect for a starting or growing business. Close to all local shopping amenities and public transport with Oakleigh station just a stones throw away.

Price : annual
Building Size : 142 sqm
View : <https://www.crabtrees.com.au/lease/vic/east/oakleigh/commercial/offices/5862913>

Property Features:

- + Full first floor office
- + New carpet
- + Freshly painted
- + Multiple rooms
- + Heating & Cooling
- + Good natural light
- + Male and Female toilet
- + Kitchenette

Crabtrees Real Estate is built on history, reputation and

<https://www.crabtrees.com.au>

Crabtrees Real Estate is built on history, reputation and expertise. We offer a level of knowledge others can't match.