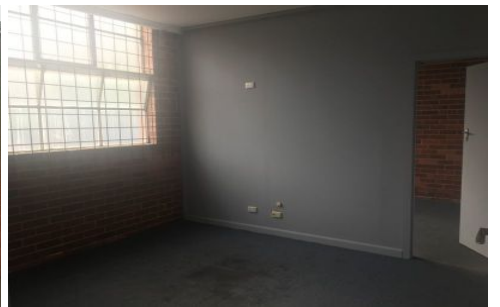




CRABTREES

REAL ESTATE



3/75 Main Road CLAYTON SOUTH VIC

Located in close proximity to Clayton Road and Westall Road, this clean and well presented warehouse suits many different uses.

Property Features:

- + 3 phase power
- + Clear span factory warehouse
- + Male and Female toilets
- + Plenty of natural light
- + 3 allocated car spaces
- + Brick Construction
- + 20sqm office

Crabtrees Real Estate is built on history, reputation and expertise.

We offer a level of knowledge others can't match.

Price : annual
Building Size : 240 sqm
View : <https://www.crabtrees.com.au/lease/vic/south-east/clayton-south/commercial/offices/5862914>

<https://www.crabtrees.com.au>

Crabtrees Real Estate is built on history, reputation and expertise. We offer a level of knowledge others can't match.