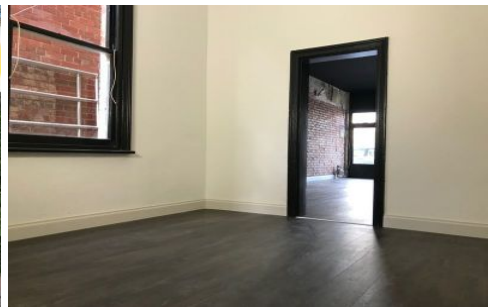




CRABTREES

REAL ESTATE



Shop 2/185-187 Waverley Road MALVERN EAST VIC

A rare opportunity to lease a beautifully renovated shop in the heart of East Malvern close to shops, transport and Monash university.

Features:

- + Retail space of 76sqm approx.
- + High ceilings painted black
- + Exposed brick
- + Dark timber floors
- + Separate room behind shop
- + Includes toilet and kitchenette
- + Central location

The space has just been refurbished, so act quickly as it won't last long.

Crabtrees Real Estate is built on history, reputation and

Price : NEGOTIABLE
Building Size : 76 sqm
View : <https://www.crabtrees.com.au/lease/vic/east/malvern-east/commercial/offices/5862932>

<https://www.crabtrees.com.au>

Crabtrees Real Estate is built on history, reputation and expertise. We offer a level of knowledge others can't match.