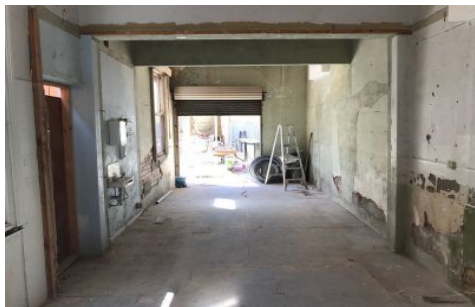




CRABTREES

REAL ESTATE



Rear Studi/185-187 Waverley Road MALVERN EAST VIC

A rare opportunity to lease a self contained studio ideal for a small business, office, storage or artisitic space in the heart of East Malvern close to shops, transport and Monash university.

Features:

- + Studio space of 35sqm approx.
- + High ceilings
- + Central location
- + Option to include toilet and kitchenette

The space has just been refurbished, so act quickly as they do not come available very often.

Crabtrees Real Estate is built on history, reputation and expertise.

Price : call agent
Building Size : 35 sqm
View : <https://www.crabtrees.com.au/lease/vic/east/malvern-east/commercial/offices/5862933>

<https://www.crabtrees.com.au>

Crabtrees Real Estate is built on history, reputation and expertise. We offer a level of knowledge others can't match.