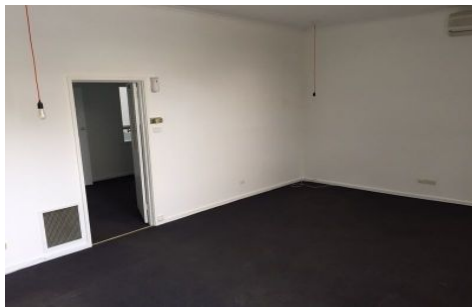




CRABTREES

REAL ESTATE



3 Millicent Street BURWOOD VIC

Well presented older style stand alone office warehouse in a great location.

Features:

- + Two offices
- + Open warehouse
- + Motorised roller door
- + Kitchenette and toilet facilities
- + Rear roller door with access to rear yard
- + Available end November

Located between Burwood Highway and Highbury Road just 14 kms from the CBD, minutes from Monash M1 Freeway via Warrigal Road, close to Holmesglen TAFE, Deakin University and Chadstone Shopping Centre.

Crabtrees Real Estate is built on history, reputation and

Price : Contact Agent
Building Size : 275 sqm
View : <https://www.crabtrees.com.au/lease/vic/east/burwood/commercial/industrial/5862970>

<https://www.crabtrees.com.au>

Crabtrees Real Estate is built on history, reputation and expertise. We offer a level of knowledge others can't match.