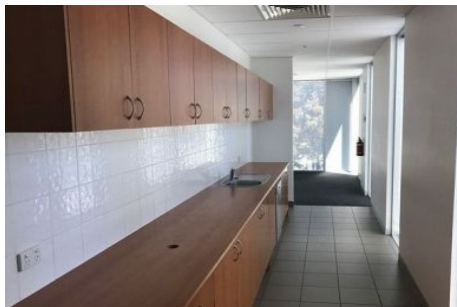




CRABTREES

REAL ESTATE



7/1-3 Compark Circuit MULGRAVE VIC

Located within Mulgrave's Commercial office precinct in Compark Circuit, with great access to all major arterial roads including Wellington Road and Springvale Road.

Never go without, Brandon Park shopping center located just 4kms away along with bus stops just outside Compark Circuit!

Property features:

- + Mixture of meeting rooms, boardrooms and partitioned offices
- + Fully carpeted throughout
- + Fully air conditioned
- + Can be split into two separate offices
- + Great natural light
- + Kitchenette

Price : \$75,000
Building Size : 297 sqm
View : <https://www.crabtrees.com.au/lease/vic/east/mulgrave/commercial/offices/5863026>

<https://www.crabtrees.com.au>

Crabtrees Real Estate is built on history, reputation and expertise. We offer a level of knowledge others can't match.