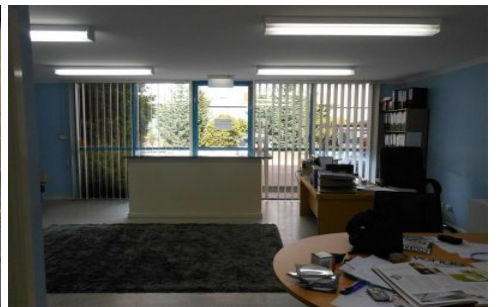




CRABTREES

REAL ESTATE



7/126-134 Fairbank Road CLAYTON VIC

Versatile and functional Office Warehouse of approx 456sqm* located in popular Clayton Business Park.

Property features:

- + Good warehouse height
- + 3 Phase power
- + Motorised roller door access
- + Quality offices over two levels of 105sqm*
- + Onsite car parking

Crabtrees Real Estate is built on history, reputation and expertise.

We offer a level of knowledge others can't match.

Our team strategically located across the eastern and

Price : \$44,000
Building Size : 456 sqm
View : <https://www.crabtrees.com.au/lease/vic/east/clayton/commercial/industrial/5863035>

<https://www.crabtrees.com.au>

Crabtrees Real Estate is built on history, reputation and expertise. We offer a level of knowledge others can't match.