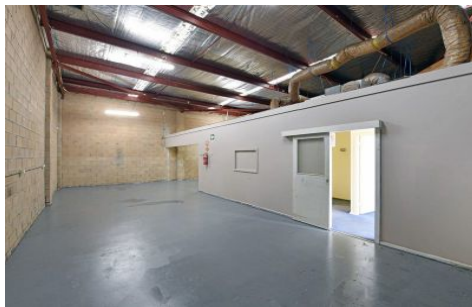




CRABTREES

REAL ESTATE



10/19-23 Kylie Place CHELTENHAM VIC

Neat and well appointed office / warehouse in popular industrial area of Cheltenham. With good access to Keys Road, Chesterville Road and South Road you'll never be late.

Features include:

- + New security system
- + Freshly painted
- + Carpeted and a/c offices
- + Clear warehouse
- + Toilet and kitchen amenities
- + On site parking
- + 3 Phase power

Price : annual
Building Size : 120 sqm
View : <https://www.crabtrees.com.au/lease/vic/bayside/cheltenham/commercial/industrial/5863043>

Crabtrees Real Estate is built on history, reputation and expertise.

<https://www.crabtrees.com.au>

Crabtrees Real Estate is built on history, reputation and expertise. We offer a level of knowledge others can't match.