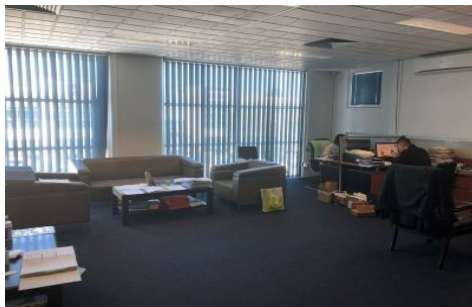
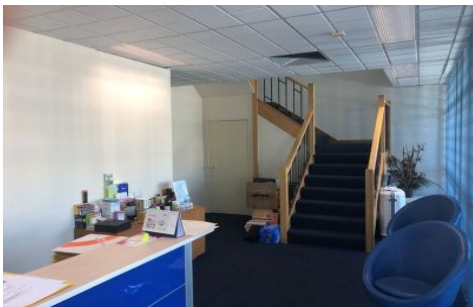




CRABTREES

REAL ESTATE



7/2-4 Sarton Road CLAYTON VIC

Located within the heart of Clayton industrial precinct. this well appointed office warehouse will not last long.

Featuring:

- + 254sqm of functional warehouse space
- + Fully carpeted, partitioned and air conditioned offices
- + First floor Office 93sqm
- + Ground floor office 76sqm
- + Separate male and female amenities and kitchenette
- + 6 car spaces and ample on street parking available
- + Great location just off princes highway and wellington road, with good access to Monash freeway
- + INSPECT NOW!

Crabtrees Real Estate is built on history, reputation and expertise.

Price : annual
Building Size : 423 sqm
View : <https://www.crabtrees.com.au/lease/vic/east/clayton/commercial/industrial/5863049>

<https://www.crabtrees.com.au>

Crabtrees Real Estate is built on history, reputation and expertise. We offer a level of knowledge others can't match.