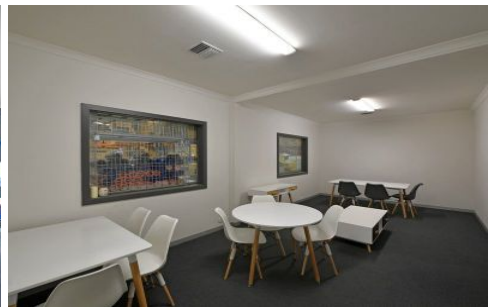
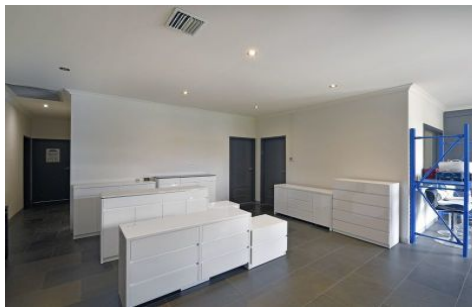




# CRABTREES

REAL ESTATE



## 25-27 De Havilland Road MORDIALLOC VIC

Crabtrees are pleased to offer for sale or lease this quality factory warehouse.

### Features:

- + Air-conditioned fitted showroom offices of 108sqm\*
- + Bright warehouse of 1,657sqm\*
- + Above average power supply and gas supply
- + Two motorised roller doors
- + Front concrete apron ideal for loading/unloading truck and containers
- + Ample parking on site
- + Recently refurbished facilities including kitchen and bathrooms

Ideally located just off Lower Dandenong Rd close to Warrigal Rd, Nepean Highway, Boundary Rd and the Mordialloc Bypass.

**Price** : Sale:POA;Lease:POA  
**Building Size** : 1765 sqm  
**Land Size** : 2326 sqm  
**View** : <https://www.crabtrees.com.au/sale/vic/bayside/mordialloc/commercial/industrial/5863050>



**Gavin Dumas**  
**(03) 95678888**

<https://www.crabtrees.com.au>

Crabtrees Real Estate is built on history, reputation and expertise. We offer a level of knowledge others can't match.