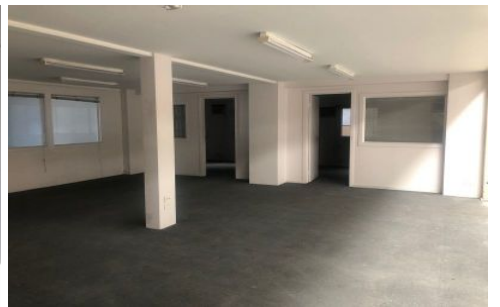
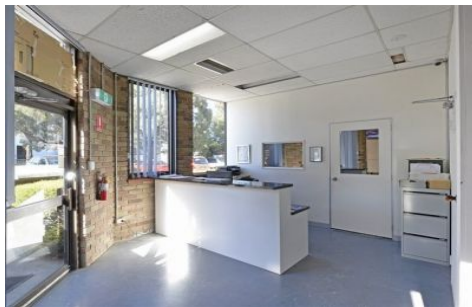




CRABTREES

REAL ESTATE



45 Gatwick Road BAYSWATER VIC

Located within a busy pocket of industrial Bayswater, positioned only moments from Canterbury Road, this hardworking facility has stood the test of time and is ready for its new occupier!

Featuring;

- + Factory warehouse of 1138 sqm approx with good power supply and multiple roller door access
- + Including reception area, management office and a variety of workshop office spaces
- + Various staff amenities including a number of break rooms, water bubblers and separate male and female toilets

Price : annual
Building Size : 1138 sqm
Land Size : 1914 sqm
View : <https://www.crabtrees.com.au/lease/vic/east/bayswater/commercial/offices/5863073>

<https://www.crabtrees.com.au>

Crabtrees Real Estate is built on history, reputation and expertise. We offer a level of knowledge others can't match.