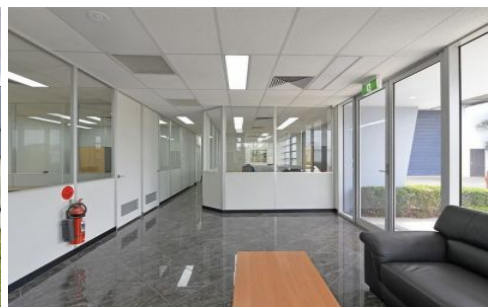




CRABTREES

REAL ESTATE



2 Torteval Place CLAYTON VIC

Crabtrees are pleased to offer for lease this solid, near new office warehouse of 1,305sqm approx. centrally located in Clayton near the corner of McNaughton Road just off Princes Highway.

Features:

- + High clearance warehouse of 1,148sqm*
- + Modern single level offices of 157sqm*
- + Offices include a reception, boardroom and a mix of offices and open plan
- + Kitchen and separate male & female facilities
- + Container height roller door with canopy
- + Huge secure/fenced front yard
- + Ample off street parking

Great location close to Monash Freeway and Princes Highway with corporate neighbours including Linfox, Bosch

Price : call agent
Building Size : 1305 sqm
Land Size : 2080 sqm
View : <https://www.crabtrees.com.au/lease/vic/east/clayton/commercial/industrial/5863099>

<https://www.crabtrees.com.au>

Crabtrees Real Estate is built on history, reputation and expertise. We offer a level of knowledge others can't match.