



## 1 Precision Lane Notting Hill VIC

10

Located only moments to the M1 freeway and surrounded by major international organisations such as Mercedes-Benz, NEC, Adidas & Monash University these buildings will impress!

**Price** : \$54,900 pa  
**Building Size** : 322 sqm  
**View** : <https://www.crabtrees.com.au/lease/vic/east/notting-hill/commercial/industrial/5863133>

### Features:

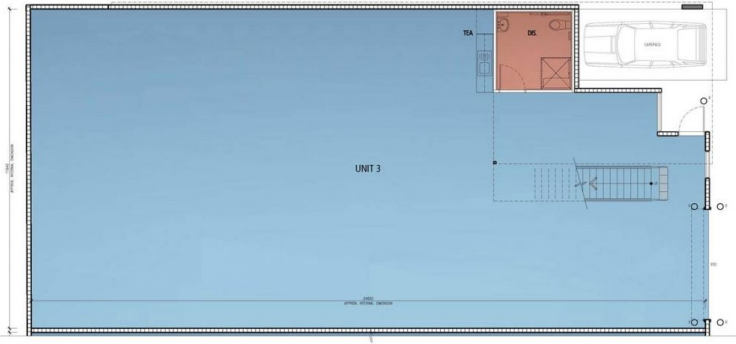
- + Includes first floor mezzanine office of 46 sqm
- + Warehouse area of 276 sqm
- + Office areas are fully carpeted and air-conditioned throughout
- + Unisex disabled amenities, including shower with attached kitchenette
- + Clear span warehouse with internal clearance of 7m approximately
- + Warehouse lighting
- + Container height roller shutter door



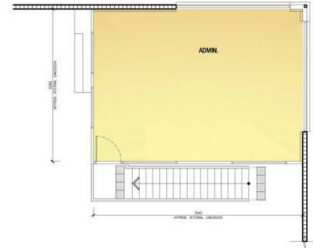
**Joe Monea**  
(03) 95678888



**Luke Pitcher**  
(03) 95678888



WAREHOUSE 3 PLAN  
SCALE: 1/8" = 1'-0"



OFFICE 3 MEZZANINE PLAN  
SCALE: 1/8" = 1'-0"

Proposed Office Warehouse  
Precision International

MARKETING  
UNIT 3



DATE: March, 2015  
DRAWN BY: MKB  
SCALE: 1/8" = 1'-0"  
NO: 13057  
MK03 8

