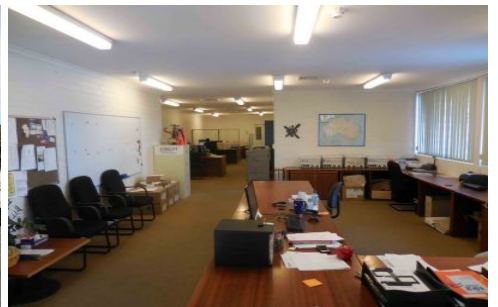
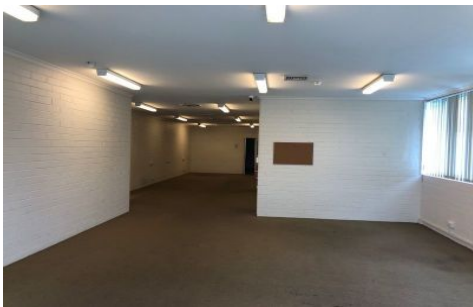




CRABTREES

REAL ESTATE



1/170 Forster Road Mount Waverley VIC

Crabtrees Real Estate are pleased to offer for lease this office warehouse located with immediate access to M1 Freeway and close to Ferntree Gully, Blackburn & Waverley Roads.

Features:

- + Open plan and partitioned office
- + Warehouse with roller door access
- + On site parking
- + Separate kitchen and tea room
- + Large mezzanine
- + On site cafes, child care & more...

Price : \$36,500 (incl. outgoings) pa
Building Size : 251 sqm
View : <https://www.crabtrees.com.au/lease/vic/east/mount-waverley/commercial/industrial/5863178>



Luke Pitcher
(03) 95678888

<https://www.crabtrees.com.au>

Crabtrees Real Estate is built on history, reputation and expertise. We offer a level of knowledge others can't match.