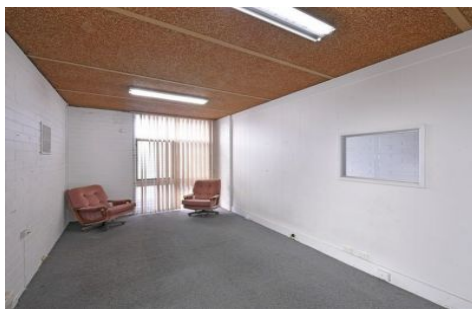




CRABTREES

REAL ESTATE



23 Kembla Street Cheltenham VIC

Solid freestanding office factory warehouse of 916sqm on a site of 1,268sqm ideally located with proximity to Centre Dandenong Road, Warrigal Road and Nepean Highway.

Features:

- + Clearspan warehouse of 880sqm
- + Front and side roller door access
- + Space to unload a container
- + Above average 3 phase power supply
- + Gas connection
- + Secure front fenced yard

Short term lease available of 1-2 years.

Crabtrees Real Estate is built on history, reputation and expertise.

Price : \$62,000 pa
Building Size : 916 sqm
Land Size : 1268 sqm
View : <https://www.crabtrees.com.au/lease/vic/bayside/cheltenham/commercial/industrial/5863179>



Joe Monea
(03) 95678888

<https://www.crabtrees.com.au>

Crabtrees Real Estate is built on history, reputation and expertise. We offer a level of knowledge others can't match.