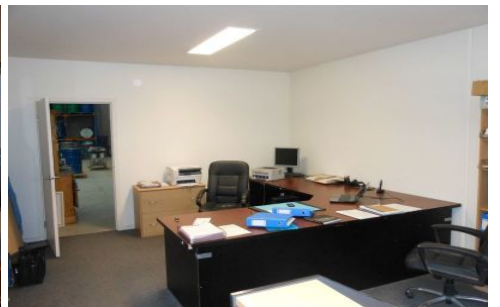




CRABTREES

REAL ESTATE



10/9 Elite Way CARRUM DOWNS VIC

AS GOOD AS NEW AND SUPER CLOSE TO EASTLINK

Features Include:

- + 220sqm total building
 - + Includes well appointed office
 - + High clearance warehouse
 - + Container height roller door access
 - + Seconds from Eastlink and Peninsula link
 - + Only moments to both Bunnings and Masters
- For more details call today!

Price : annual
Building Size : 220 sqm
View : <https://www.crabtrees.com.au/lease/vic/bayside/carrum-downs/commercial/industrial/5863254>

<https://www.crabtrees.com.au>

Crabtrees Real Estate is built on history, reputation and expertise. We offer a level of knowledge others can't match.