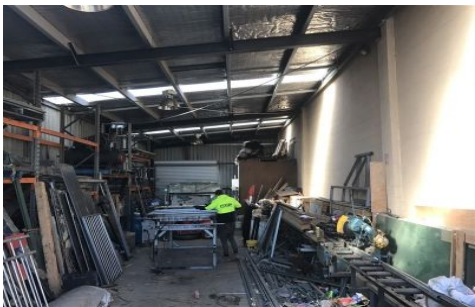




CRABTREES

REAL ESTATE



1/27 Concord Crescent CARRUM DOWNS VIC

In the heart of Carrum Downs sits this perfect starter.

Features include:

- + 174sqm total building area
- + Brick factory with reasonable height
- + Roller door access
- + Small office of 25sqm approx
- + Carparking at front
- + Excellent access to Lathams Road, Frankston-Dandenong Road, Peninsula Link and EastLink

Price : annual
Building Size : 174 sqm
View : <https://www.crabtrees.com.au/lease/vic/bayside/carrum-downs/commercial/offices/5863300>

For more details call today!

Crabtrees Real Estate is built on history, reputation and expertise.

<https://www.crabtrees.com.au>

Crabtrees Real Estate is built on history, reputation and expertise. We offer a level of knowledge others can't match.