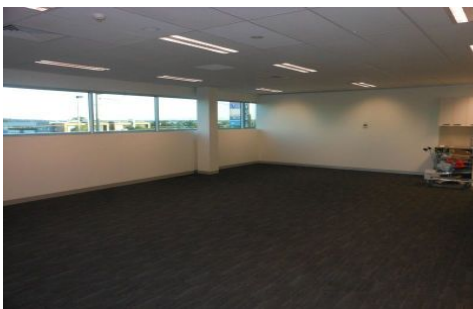




# CRABTREES

REAL ESTATE



## 1.9/1091 Stud Road ROWVILLE VIC

Complete with exceptional common areas and amenities, the building offers fantastic staff facilities which include an on site gym and an excellent cafe/restaurant.

Located close to major roads, including Eastlink and is also readily accessible by public transport.

### Features:

- + Premier location in a fast growing retail hub
- + Situated directly in front of Stud Park Shopping Centre
- + Established precinct with big name tenants
- + Quality staff amenities

**Price** : annual  
**Building Size** : 89 sqm  
**View** : <https://www.crabtrees.com.au/lease/vic/east/rowville/commercial/offices/5863304>

<https://www.crabtrees.com.au>

Crabtrees Real Estate is built on history, reputation and expertise. We offer a level of knowledge others can't match.