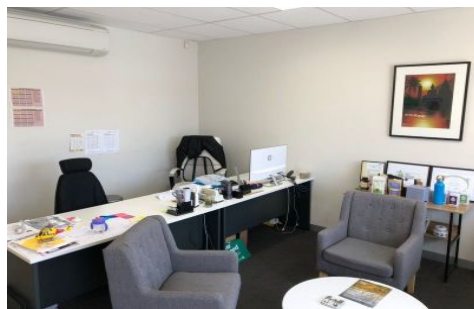




CRABTREES

REAL ESTATE



1/4 Sophie Court MORNINGTON VIC

Located in the heart of Mornington with access to Tyabb Road and Watts Road sits this perfect office warehouse.

Features Include:

- + 263sqm total building area
- + Great internal height
- + Secure parking with gates
- + Small showroom/office area
- + Male and female amenities
- + Container height roller door

Crabtrees Real Estate is built on history, reputation and expertise.

We offer a level of knowledge others can't match.

Price : Contact Agent
Building Size : 263 sqm
View : <https://www.crabtrees.com.au/sale/vic/mornington-peninsula/mornington/commercial/offices/5863342>

<https://www.crabtrees.com.au>

Crabtrees Real Estate is built on history, reputation and expertise. We offer a level of knowledge others can't match.