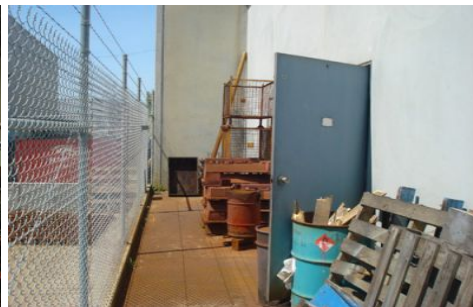




# CRABTREES

REAL ESTATE



This street facing premises is ideal for owner occupiers or investors alike:

- Premises consists of:
- + 270sqm warehouse
- + 30sqm office
- + Street frontage
- + Container height RSD
- + 5 car parks on title

This factory **MUST** be sold

CALL NOW to inspect

Tony Aminian 0413 516 193

**Price** : \$339,950  
**Building Size** : 300 sqm  
**View** : <https://www.crabtrees.com.au/sale/vic/bayside/carrum-downs/commercial/industrial/5863502>

<https://www.crabtrees.com.au>

Crabtrees Real Estate is built on history, reputation and expertise. We offer a level of knowledge others can't match.