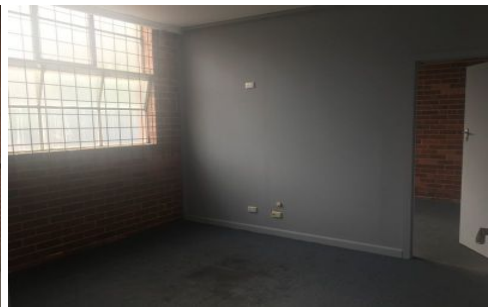
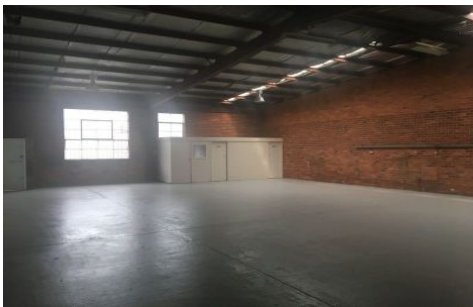




# CRABTREES

REAL ESTATE



### 3/75 Main Road Clayton South VIC

Located in close proximity to Clayton Road and Westall Road, this clean and well presented warehouse suits many different uses.

#### Property Features:

- + Total building area: 240 sqm
- + 3 phase power
- + Clear span factory warehouse
- + Male and female toilets
- + Plenty of natural light
- + 3 allocated car spaces
- + Brick construction
- + 20sqm office

Crabtrees Real Estate is built on history, reputation and expertise.

**Price** : \$25,000 pa  
**Building Size** : 240 sqm  
**View** : <https://www.crabtrees.com.au/lease/vic/south-east/clayton-south/commercial/industrial/6887354>



**Saul Akoka**  
(03) 95678888



**Pana Kritikos**  
(03) 95678888

<https://www.crabtrees.com.au>

Crabtrees Real Estate is built on history, reputation and expertise. We offer a level of knowledge others can't match.